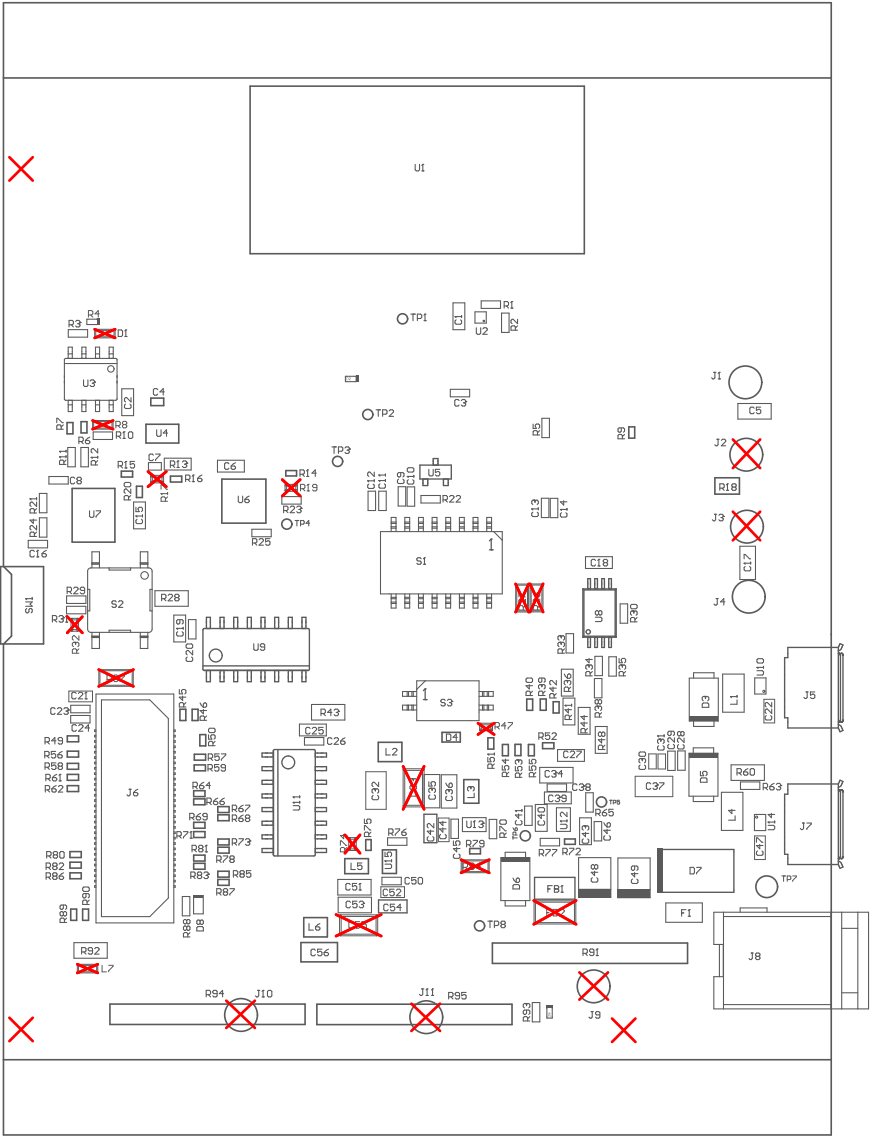


z21 ■Install label in silkscreened box after final wash. Text shall be 8 pt font. Text shall be per the Label Table in the PDF schematic.
z22 ■These assemblies are ESD sensitive, ESD precautions shall be observed.
z23 ■These assemblies must be clean and free from flux and all contaminants. Use of no clean flux is not acceptable.
z24 ■These assemblies must comply with workmanship standards IPC-A-610 Class 2, unless otherwise specified.
z25 ■INDICATION FOR COMPONENTS DNP ARE GIVEN AT THEIR CATHODE SIDE.

COMPONENTS MARKED 'DNP' SHOULD NOT BE POPULATED.
ASSEMBLY VARIANT: 001_IWR



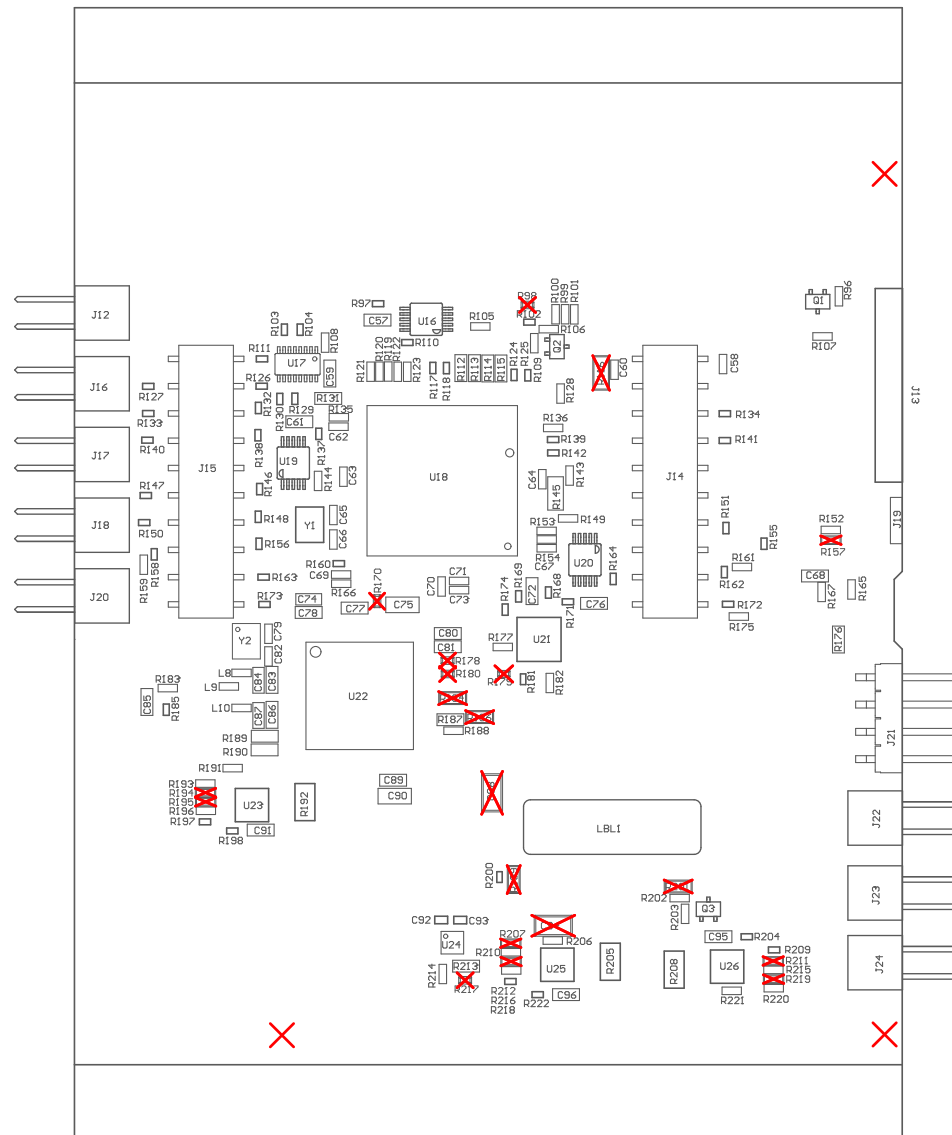
PCB VIEWED FROM TOP SIDE

BOARD #: PROC212

REV: A

SUN REV: Not in version control

Assembly Layer Top	TID #: N/A		
PLOT NAME = Top Assembly Drawing	GENERATED : 28-10-2025 14:37:43	TEXAS INSTRUMENTS	



COMPONENTS MARKED 'DNP' SHOULD NOT BE POPULATED.
ASSEMBLY VARIANT: 001_IWR

PCB VIEWED FROM BOTTOM SIDE	BOARD #: PROC212	REV: A	SVN REV: Not in version control
Assembly Bottom Layer	TID #: N/A		
PLOT NAME = Bottom Assembly Drawing	GENERATED : 28-10-2025 14:37:43		TEXAS INSTRUMENTS